



SAILING INSTRUCTIONS

1. RULES

- 1.1 The regatta will be governed by the rules as defined in *The Racing Rules of Sailing* (RRS).
- 1.2 No national prescriptions will apply.
- 1.3 Decisions of the International Jury (IJ) will be final as provided in RRS 70.5.
- 1.4 If there is a conflict between languages the English text will take precedence.

2. ADDITIONAL IDENTIFICATION

Each day while racing, the first, second and third boats in series ranking at the beginning of the day shall display a yellow, blue and red bib respectively. The organizing authority will supply bibs which shall be collected every day at the race office before racing and returned there after racing.

3. NOTICES TO COMPETITORS

- 3.1 Notices to competitors will be posted on the official notice board in the YC Labud boat hangar (north door).
- 3.2 The regatta office is located at the YC Labud boat hangar 1st floor (north door).

4. CHANGES TO SAILING INSTRUCTIONS

Any change to the sailing instructions (SI) will be posted before 09:00 on the day it will take effect, except that any change in the schedule of races will be posted by 20:00 on the day before it will take effect. Reassignment ashore of classes to racing areas will be posted before flag D is displayed; see SI 5.2.

5. SIGNALS MADE ASHORE

- 5.1 Signals made ashore will be displayed with the applicable class flag(s) from the flagpole in front of YC Labud club house. If no class flag is displayed, the signal will apply to all classes.
- 5.2 Flag D with one sound means "The warning signal will be made not less than 60 minutes after flag D is displayed. Boats are requested not to leave the harbor until this signal is made".
- 5.3 When flag Y is displayed ashore, RRS 40 applies at all times while afloat. This changes the RRS Part 4 Preamble.

6. SCHEDULE OF RACES

- 6.1 Dates of racing are from March 14 through March 17 2013.
- 6.2 **Number of races**

14. March	two races per day for each class
15. March	two races per day for each class
16. March	two races per day for each class
17. March	one race is scheduled for each class

One extra race per day may be sailed, provided that no class becomes more than one race ahead of schedule and the change is made according to SI 4.

- 6.3 The scheduled time of the warning signal for the first race for the first class is 13:00 on March 14 and 11:00 on March 15, 16 and 17.



- 6.4 To alert boats that a race or sequence of races will begin soon, the orange starting line flag will be displayed with one sound for at least five minutes before a warning signal is displayed.
- 6.5 On the last day of the regatta no warning signal will be made after 14:00 hrs.

7. CLASS FLAGS

Class	Class flag
470 - M&W	class logo (insignia) on a white background
FINN	class logo (insignia) on a white background
LASER STANDARD	class logo (insignia) on a white background
LASER RADIAL - M&W	class logo (insignia) on a red background

8. RACING AREAS

- 8.1 Attachment A shows the location of the racing areas.
- 8.2 Assignments of classes to racing areas will be posted by 09:00 on the day they will take effect.
- 8.3 On the water, the Race Committee (RC) may move a race course to a different racing area. When moving to a new racing area, the RC vessel will display flag L.

9. THE COURSES

- 9.1 The diagrams in Attachment B – Courses show the courses and course designations, including the approximate angles between legs, the order in which marks are to be passed, and the side on which each mark is to be left.
- 9.2 No later than the warning signal, the RC signal boat will display the course designation and approximate compass bearing of the first leg.

10. MARKS

- 10.1 The starting marks will be RC boats.
- 10.2 All course marks will be Orange cylindrical buoys with sponsorship logo
- 10.3 Finishing mark will be Orange spherical buoy
- 10.4 New mark will be Red cylindrical buoy without sponsorship logo
- 10.5 A RC boat signaling a change of a leg of the course is a mark as provided in instruction 12.3.

11. THE START

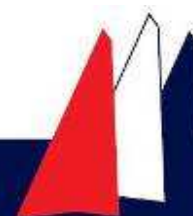
- 11.1 The starting line will be between staffs displaying orange flags on the starting marks.
- 11.2 Boats whose warning signal has not been made shall avoid the starting area during the starting sequence for other races.
- 11.3 A boat starting later than 4 minutes after her starting signal will be scored Did Not Start (DNS) without a hearing. This changes RRS A4.

12. CHANGE OF THE NEXT LEG OF THE COURSE

- 12.1 Changes of the next leg of the course will be signaled as follows:
- To change the next leg of the course towards Mark 1 or Mark 2, the RC will lay a new mark and remove the original mark as soon as practicable. When in a subsequent change a new mark is replaced, it will be replaced by an original mark.
 - To change the next leg of the course towards the gate or finish line, the RC will move the original marks (or the finishing line) to a new position.
- 12.2 When one gate mark is missing, the remaining mark shall be rounded to port.
- 12.3 Except at a gate, boats shall pass between the RC boat signaling the change of the next leg of the course and the nearby mark, leaving the mark to port and the RC boat to starboard. This changes RRS 28.

13. THE FINISH

The finishing line will be between a staff displaying a blue flag on a Mark (RC boat) and the course side of the starboard end finishing mark.



14. PENALTY SYSTEM

RRS Appendix P will apply.

15. TIME LIMITS

15.1 Mark 1 time limits and target times in minutes are as follows:

Class	Mark 1 time limit (min)	Target race time (min)	Finish time limit (min)
470 - M&W	30	60	90
Laser Standard	30	60	90
Laser Radial - M&W	30	60	90
Finn	30	60	90

15.2 If no boat has passed Mark 1 for the first time within the Mark 1 time limit, the race will be abandoned. Failure to meet the target time will not be grounds for redress. This changes RRS 62.1(a).

15.3 If no boat has started, sailed the course and finished within the finish time limit, the race will be abandoned.

15.4 Boats failing to finish within 20 minutes after the first boat in their class sails the course and finishes will be scored Did Not Finish (DNF) without a hearing. This changes RRS 35., A4, and A5.

16. PROTESTS AND REQUESTS FOR REDRESS

16.1 Protest forms are available at the race office at the at YC Labud boat hangar 1st floor. Protests and requests for redress or reopening shall be delivered there within the appropriate time limit.

16.2 For each class, the protest time limit is 60 minutes after the last boat has finished the last race of the day or the RC signals no more racing today, whichever is later.

16.3 Notices will be posted no later than 30 minutes after the protest time limit to inform competitors of hearings in which they are parties or named as witnesses. Hearings will be held in the protest room, located at YC Labud boat hangar 1st floor, beginning at the time posted.

16.4 Notices of protests by the RC or Protest Committee will be posted to inform boats under rule 61.1(b).

16.5 A list of boats that have been penalized under Appendix P for breaking rule 42 will be posted.

16.6 Breaches of NoR 2, 3 and 14, and SI 2, 11.2, 12,3, 18, 19, 20, 21, 23, 24 or 25 will not be grounds for a protest by a boat. This changes RRS 60.1(a). Penalties for these breaches and minor breaches of class rules may be less than disqualification if the International Jury (IJ) so decides.

16.7 On the last scheduled day of racing a request for reopening a hearing shall be delivered

(a) within the protest time limit if the requesting party was informed of the decision on the previous day;

(b) no later than 30 minutes after the requesting party was informed of the decision on that day. This changes RRS 66.

16.8 On the last scheduled day of racing a request for redress based on a IJ decision, shall be delivered no later than 30 minutes after the decision was posted. This changes RRS 62.2.

16.9 Decisions of the IJ will be final as provided in RRS 70.5.



17. SCORING

17.1 The Low Point System will be used, amended so that a first place finish scores 0 points. This changes RRS A 4.1

<i>Finishing place</i>	<i>Points</i>
First	0
Second	2
Third	3
Fourth	4
Fifth	5
Sixth	6
Seventh	7
Each place thereafter	Add 1 point

17.2 Three races are required to be completed to constitute a series.

17.3 When fewer than 5 races have been completed in any series, a boat's series score will be the total of her race scores. When 5 or more races have been completed, a boat's series score will be the total of her race scores excluding her worst score.

17.4 To request correction of an alleged error in posted race or series results, a boat may complete a scoring enquiry form available at the race office.

18. SAFETY REGULATIONS

18.1 Competitors in single-handed events shall wear adequate personal buoyancy at all time while on the water, except briefly while changing or adjusting clothing or personal equipment. This changes RRS 40.

18.2 A boat requesting assistance should attempt to signal by waving an extended arm.

18.3 A boat that retires from a race shall notify the RC signal vessel before leaving the course, or when that is not possible, notify the regatta office as soon as practicable after she returns to the harbour.

18.4 Boats that are not leaving the harbour to race, shall inform the regatta office prior to the start of the first race of the day.

19. EQUIPMENT AND MEASUREMENT CHECKS

A boat or equipment may be inspected at any time for compliance with the class rules and sailing instructions. On the water, a boat can be instructed by a race committee equipment inspector or measurer to proceed immediately to a designated area for inspection

20. SUPPORT AND COACH BOATS

20.1 Support boats shall be marked in compliance with NoR 13.1

20.2 Support boats shall not interfere with boats racing or official boats, or create a wake that affects boats racing.

20.3 Support boats shall not be positioned:

20.3.1. Closer than 50 meters of any boat racing.

20.3.2. Within 50 meters of the starting line and marks from the time of the preparatory signal until all boats have left the starting area, or the race committee signals a postponement, general recall or abandonment.

20.3.3. Between any boat racing and the next mark of the course.

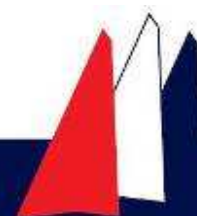
20.3.4. Between the inner and outer trapezoid courses when boats are racing on both courses.

20.3.5. Within 50 meters of any mark of the course while boats are in the vicinity of that mark.

20.3.6. Within 50 meters of the finishing line and marks while boats are finishing.

20.4 In addition, support boats that are motoring above 5 knots shall remain at least 150 metres from any boat racing.

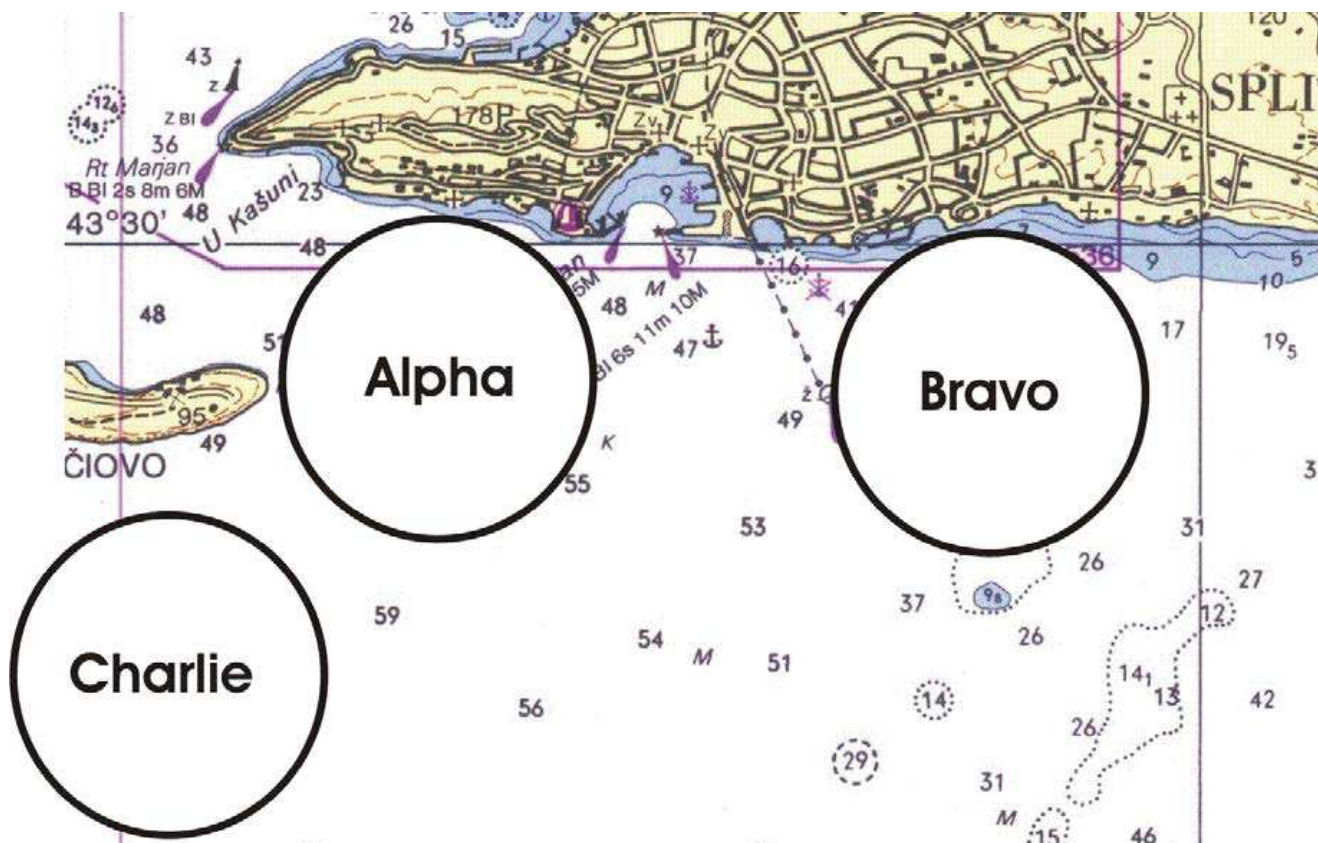
20.5 Support boats shall comply with any reasonable request from a regatta official.



- 20.6** Each boat carrying coaches and/or support personnel shall display an identification number (sticker). Numbered identification stickers will be provided by the organizing authority at registration.
- 20.7** Team leaders, coaches, and other support personnel shall register at the registration office before 10:00 hours, 14. March 2013. at the YC Labud.
- 21. ADVERTISING**
Boats shall display advertising supplied by the organizing authority as follows: stickers shall be attached to the hull as described in ISAF Regulation 20.
- 22. OFFICIAL BOATS** will be marked as follows:
Race Committee boats will fly green flags with RC letters
Jury/Judges – flags with 'Jury' letters
First aid/Medical – Red Cross flag
Media - PRESS
Race Committee support boats - event flag
Rescue or Course Marshalls - event flag
Failure to display flag as prescribed in this instruction will not be ground for redress.
- 23. TRASH DISPOSAL**
Trash may be placed aboard support and official boats.
- 24. BERTHING**
When ashore, boats shall be kept in the assigned area.
- 25. RADIO COMMUNICATION**
Except in an emergency, a boat shall neither make radio transmissions while racing nor receive radio communications not available to all boats. This restriction also applies to mobile telephones.
- 26. PRIZES**
As provided in Notice of race
- 27. DISCLAIMER OF LIABILITY:**
Competitors participate in the regatta entirely at their own risk See RRS 4, Decision to Race. The organizing authority will not accept any liability for material damage or personal injury or death sustained in conjunction with or prior to during, or after the regatta.
- 28. INSURANCE**
Each participating boat shall be insured with valid third-party liability insurance with a minimum cover of EUR 500,000 per incident or the equivalent.
- 29. RIGHTS TO USE NAME AND LIKENESS**
By participating in these events, competitors automatically grant to the Organizing authority and the event sponsors the right, in perpetuity, to make, use, and show, at their discretion, any photography, audio and video recordings, and other reproductions of them made at the venue or on the water from the time of their arrival at the venue, until their final departure, without compensation.



Attachment A – Racing Areas (SI 8)



Assignments of classes to racing areas will be posted as prescribed in SI 8.2.
Reassignments of classes to racing areas will be posted as prescribed in SI 4 and 5.2, or on the water as described in SI 8.3.



Attachment B – Courses

Trapezoid courses: class 470, Finn, Laser Standard and Laser Radial

Inner Trapezoid

Course Designation **I2** or **I3**

I2: Start -1 -4S or 4P -1 -2 -3 -Finish

I3: Start -1 -4S or 4P -1 -4S or -1 -2 -3 -Finish

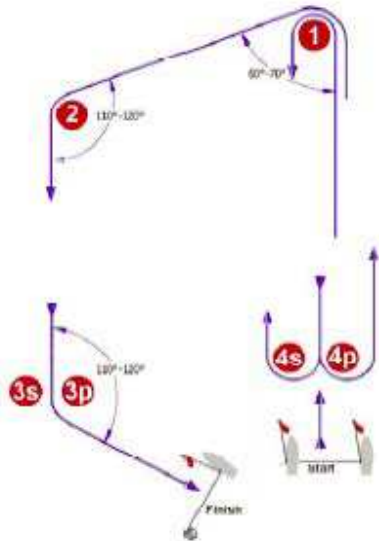
Outer Trapezoid

Course Designation **O2** or **O3**

O2: Start -1 -2 -3S or 3P -2 -3 -Finish

O3: Start -1 -2 -3S or 3P-2-3S or 3P-2-3-Finish

I



O

